



## **Fitting Guidelines.**

To be left with the customer after installation.

Fitting guidelines for the following models:

### **INGLEBEAM**

(Manufactured in solid aggregate)

**BIDEFORD  
CLOVELLY  
FOWEY  
HARTLAND**

#### **Index.**

Front cover.

Fitting guidelines. Page 1 to 8.

Front cover.

# FITTING GUIDELINES FOR INGLEBEAMS.

## Models: Bideford, Clovelly, Fowey, Hartland.

(Manufactured in solid aggregate material)

(These guidelines consist of 8 pages).

### Important: Safety and Technical.

- Please read all of these guidelines and diagrams before commencing any installation.
- This beam **must be** installed by an experienced, suitably qualified, and competent fitter.
- This beam **IS NOT** recommended for DIY or single person installation.
- The fireplace beam installation **must be** in accordance with Building Regulations, British Standards and any Rules in Force. Current Document J outlines various British Standards that cover all aspects of fireplace installation for England and Wales. The fixing of stonework is covered by BS 8298 "Code of practice for Design and Installation of Natural Stone Cladding and Lining.
- Make reference to the Stone Federation of Great Britain, guidance on fire surrounds.(www.stonefed.org.uk)
- Reference must be made to all Building Regulations and any Rules In Force for areas outside of the UK, for example Scotland and Southern Ireland etc.
- Should any conflict occur between these guidelines and any applicable regulations and any rules in force then the Regulations and Rules in Force shall apply.
- Newman Inglebeams are manufactured in fire resistant materials.
- Minimum clearance from Newman Inglebeam to stove appliance is a minimum of 150mm, subject to current building regulations, any rules in force and stove manufacturers instructions.
- The beam installation **must be** in accordance with planning permission and local building control.
- Only suitable for solid brick wall installation.
- If the beam cannot be permanently fixed to a solid brick chimney such as block work, studwork or any other structure other than a solid brick chimney then we recommend that you consult an architect or structural engineer for advice.
- The beam **MUST NOT** be used as a constructional lintel or in any load bearing situations.
- All beam mechanical fixings must be stainless steel or at least galvanised steel and be totally corrosion proof and of adequate size and strength to fix beam.
- The consequences of failure of a beam incorrectly installed and secured are extremely serious. It is essential that a beam is installed and secured to withstand foreseeable abuse such as a child pulling down on a cantilevered beam.
- Fixing dowels or alternatively threaded studs washers and nuts **must be used** when fitting beam. The shelf and other overhanging components should be adequately restrained in all instances as they are liable to tip forward so it is imperative this is securely fixed back into the wall so there is no possibility of any piece tipping and falling.
- **Do not** cut the dowels or studs.
- Fixing brackets must be used where applicable.
- The beam **must be** completely adhered to the chimney.
- Always follow adhesive manufacturer's instructions for suitability and use etc.
- Brackets, anchorage points and dowels to be fitted against brickwork **not** plaster.
- All mechanical fixings to be chased into mounting wall brickwork to enable complete contact of all rear surface of beam to brick wall so a total bond can be made when adhering beam to brick wall.
- Ensure all mechanical fixings do not obstruct total face to face contact of any beam mating parts.
- Ensure these fitting guidelines together with the fireplace customer care sheet are given to the customer. Subsequently these to be passed on to any new home owner or occupier.

## **Important.**

Ensure the fireplace and beam is permanently fixed to the chimney wall safely and securely and fitted correctly to all regulations, British Standards and any rules in force. If this cannot be achieved **do not fit the fireplace and beam.**

## **Safety precautions.**

Use all necessary safety clothing, for example:

- Suitable dust masks where there is a risk of dust contamination
- Suitable protective gloves.
- Suitable Protective foot wear.
- Suitable Protective eye goggles.
- Suitable cloth protection.
- Never wear loose clothing or jewellery.
- Ensure long or loose hair is adequately protected, so as not to be a hazard when using tools etc.
- Ensure all fitting tools and equipment to be used are in good working order and safety approved and suitable for the use intended.
- Always comply with all Health & Safety regulations.
- This fireplace has parts that are irregular in shape and above 25kg in weight, therefore installation is recommended for more than one person or suitable lifting equipment to be used.

## **Types of fires suitable for the above model.**

- Multi fuel, or wood burning stoves manufactured to CE standards of compatible size for fireplace, chimney and flue, complying with building regulations and any rules in force.
- The stove must be CE approved and rated so that the temperature under the stove at the top surface of hearth level is below 100 degrees Celsius .
- Gas stoves manufactured to CE standards of compatible size for fireplace, chimney or flue, complying with building regulations and any rules in force. The stove must be rated at a temperature below 100 degrees Celsius at hearth level.
- Electric effect fires manufactured and approved to CE standards suitable for fireplace fire opening.

## **Chimney Type.**

- Class 1. The chimney and flue **must be** in accordance with building regulations and any rules in force, with a suitable builders opening and flue, for your chosen fireplace and gas or solid fuel, or electric fire combination.
- Chimneys and flues **must be** swept and tested by an approved chimney sweep prior to fireplace installation.

## **Fireplace inspection and precautions.**

- Before installation the fireplace and beam **must be** thoroughly checked for faults or damage. If any fault or damage is observed the fireplace and beam **must not** be installed and the problems reported to your fireplace supplier. No claims of this nature will be accepted after the fireplace is installed.
- Limestone and beams can easily be damaged on installation, therefore all precautionary measures must be taken to avoid these situations i.e. taking extreme care when handling stone and the beam and always use suitable covers to protect the stone and beam whilst using equipment and fixing materials.

## **Fitting Guidelines.** (To be used in conjunction with diagrams).

### **Note:**

The beam will require other fixing materials including:

- Suitable stainless steel screws, washers and wall plugs.
- Suitable stainless steel locking wire and anchorage points (can be suitable stainless steel screws, washers, and wall plugs).
- Suitable heat proof Thixotropic two part resin chemical anchor glue suitable for cement, brickwork and metal. You must evaluate the temperature where this is used as every installation position relative to any heat producing appliance may be different, therefore you must ensure that the correct Thixotropic two part resin chemical anchor glue is used. It is recommended that the Thixotropic two part resin chemical anchor glue is able to withstand the minimum range of temperatures between -20 to +300 degrees Celsius. Contact the glue manufacturer for advise.
- Suitable heat proof thread and nut locking fluid. (For use with all steel threaded components of beam fixings), able to withstand the minimum range of temperatures between -20 to +300 degrees Celsius. Contact the nut locking fluid manufacturer for advise..
- Suitable Sealer for brickwork. Always follow manufacturers instructions.
- Suitable Silicone adhesive for brickwork, stone and concrete, temperature rated to withstand the minimum range of temperatures between -20 to +300 degrees Celsius. Always follow manufacturer's instructions.
- For all adhesives , cements, sealers and all other fixing products always seek professional advise from the manufacturer for suitability and use for the intended application.

Our beams are available with either dowel fixings or threaded stud, nut and washer fixing, depending on your fixing requirements. The dowel fixing beam models are normally used when it is not possible to gain access to the rear side of solid brick walls of which the beam is to be fitted, conversely the threaded stud, nut and washer fixings are used when access to the rear side of brick wall is possible to the beam to be fitted.

Approximate weight of beams.

1200mm wide 55kgs.

1350mm wide 60kgs

1500mm wide 65kgs

- 1) With suitable testing equipment check for live electrical cables or gas pipes and any other obstructions or connections that maybe obscured in the area of intended fireplace, (beam / legs) installation. If found use a suitably qualified person to remove and make safe.
- 2) Remove all wall coverings and emulsion in area of intended fireplace, (beam / legs) installation. Ensure the chimney face is completely sound, dry, dust, grease and contamination free before fitting. Seal all fixing areas. (Note: subject to adhesive manufacturer's instructions).
- 3) In properties with traditionally plastered brick walls the plaster to be cut back to enable the fireplace, (beam / legs) to be fixed directly to the brickwork behind. The plaster can then be made good around the fireplace surround, (beam / legs). The plaster is cut back and removed from the area of fireplace installation, (beam / legs) remove up to approximately 10mm outside the profile of fireplace, (beam / legs) to be installed. Ensure

the chimney brickwork face is completely sound, dry, dust and grease free before fitting. Seal all fixing areas with appropriate sealer. (Note: subject to adhesive manufacturer's instructions). This is good practice as there will always be a risk of the fireplace surround becoming unstable should a failure of the plaster occur.

### **Beam with dowel fixings.**

- a) Mark the position of both beam fixing dowels and strap brackets to wall, also mark outline of beam to wall
  - b) Remove any plaster in the area of intended beam installation, remove plaster approximately 10mm beyond the outline of beam marked to your wall. Also recess brickwork slightly to accommodate the two fixing brackets to allow the beam to be fully fitted against the brick wall.
  - c) Drill a hole into the brick wall at each beam dowel fixing position using a bit that is 8mm larger in diameter than the beam dowel. Ensure the holes are of adequate depth to accommodate both dowels fully to enable the complete rear surface of beam to be in contact to the wall. The holes must be of adequate size and in correct position to ensure the beam does not have to be forced into holes and to allow space for the thixotropic chemical anchor fixing glue to create a total bond around complete dowel and holes in wall when used at stage f). **WARNING.** If the beam dowels are forced into the wall holes this will create a very large force onto the beam that will cause damage and cracking to the beam.
  - d) Using a 6mm diameter masonry bit, drill an angled airway from the base of dowel hole exiting above the dowel hole on wall surface. (This is required to allow air to escape when adding glue to dowel holes).
  - e) Pull the fixing brackets straight to protrude above beam to each side of rear surface of beam. Dry fit the beam to wall. Mark bracket positions to wall for suitable stainless steel wall plugs, screws and washers. Take dimensions for suitable trestles to be used when permanently fixing beam to wall. The trestles must be able to support the weight of beam whilst all glues are curing. Locate or manufacture suitable trestles. Remove beam. Drill the wall at your pre marked bracket positions to accommodate suitable stainless steel wall plugs. Fit wall plugs.
  - f) Ensure both dowel holes and beam dowels are clean, grease free and contamination free. Ensure the rear surface of beam and wall brick work are totally clean and contamination free. Seal brickwork subject to silicone adhesive manufacturer's instructions.
  - g) Using suitable Thixotropic two part resin chemical anchor fixing glue suitable for brick, metal and masonry, fully fill both dowel holes in brick wall. Use suitable heat proof silicone adhesive for brick, cement and masonry to cover complete rear surface of beam ensuring the two types of glue do not come into contact with each other. Position the beam dowels into dowel holes containing the uncured Thixotropic two part resin in chimney. Ensure the dowels are fully located into holes so as to enable the rear surface of beam to be fully bonded to wall with the uncured silicone adhesive. Using suitable trestles support the weight of beam in correct position. Using suitable stainless steel screws and washers securely fix the beam and brackets to brick wall.
- Important:** Ensure the area around the fireplace and beam fitting area is restricted to all persons and animals until all fitting materials have fully dried and cured and all fireplace components are deemed to be installed correctly and safely.
- h) When all chemical anchor resins are fully cured, (please read Thixotropic resin manufacturer's instructions for use, safety and curing times etc). Remove trestles.
  - i) Make good the wall plaster around beam ensuring not to contaminate the beam with plaster or any other substance.

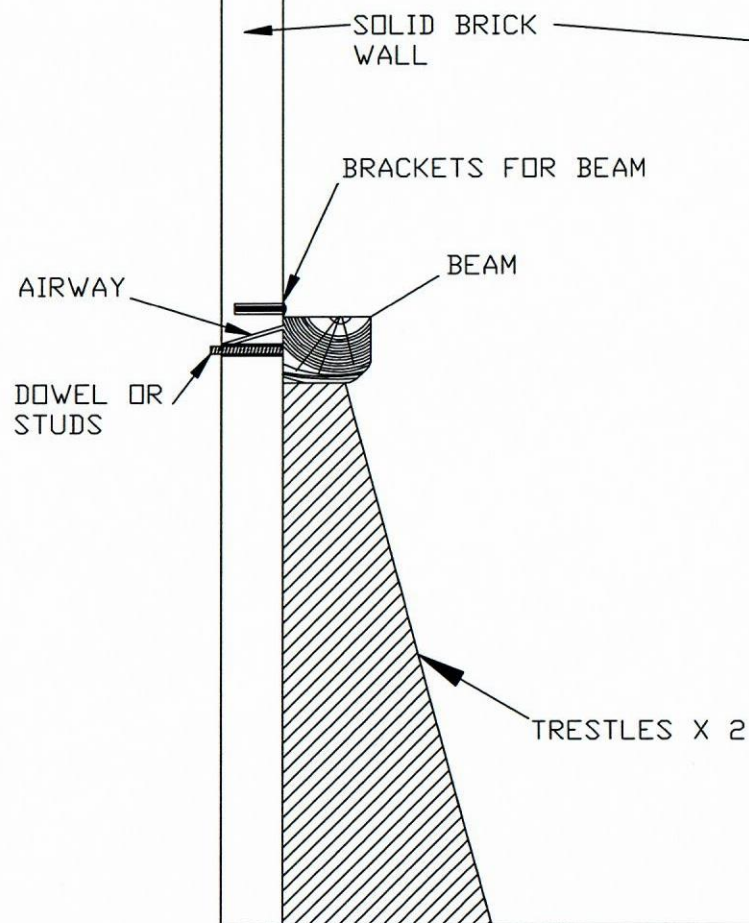
### **Beam with threaded stud, nut and washer fixings.**

- a) Mark the position of both beam fixing threaded studs and strap brackets to wall, also mark outline of beam to wall
- b) Remove any plaster in the area of intended beam installation, remove plaster approximately 10mm beyond the outline of beam marked to your wall.
- c) Drill a hole into the brick wall at each beam threaded stud fixing position using a bit that is just slightly larger than the diameter of the threaded studs, ensure to drill completely through the brick wall. The holes must be of adequate size and in correct position to ensure the beam does not have to be forced into holes. **WARNING.** If you force the beam studs into holes this will create a very large force onto the beam that will cause damage and cracking to the beam.

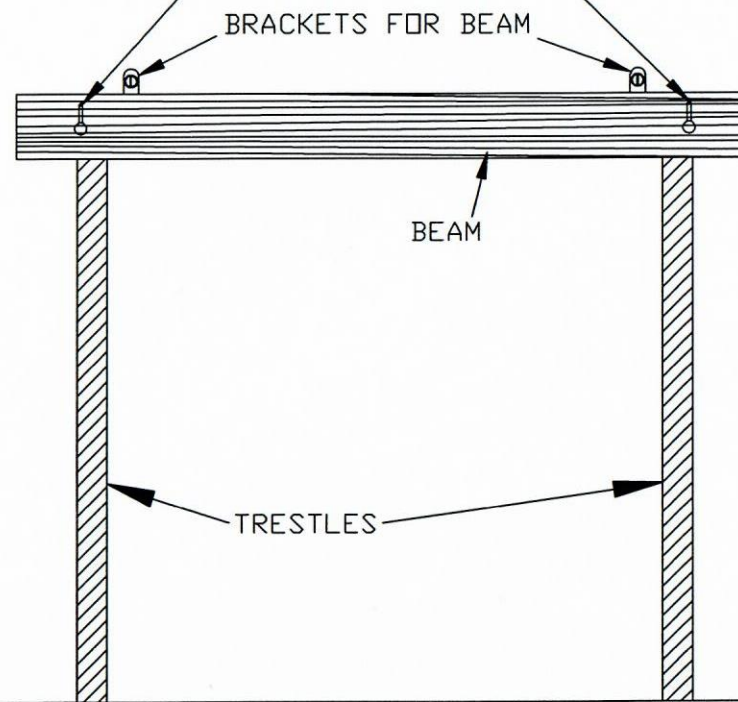
- d) Pull the fixing brackets straight to protrude above beam to each side of rear surface of beam. Dry fit the beam to wall. Mark bracket positions to wall for suitable stainless steel wall plugs, screws and washers. Take dimensions for suitable trestles to be used when permanently fixing beam to wall. The trestles must be able to support the weight of beam and be stable whilst all glues are curing. Locate or manufacture suitable trestles. Remove beam. Drill the wall at your pre marked bracket positions to accommodate suitable stainless steel wall plugs. Fit wall plugs.
- e) Ensure the rear surface of beam and wall brick work are totally clean and contamination free. Seal brickwork subject to silicone adhesive manufacturer's instructions.
- f) Use suitable heat proof concrete and brick silicone adhesive to cover complete rear surface of beam. Position the beam threaded studs through both holes to chimney wall. Ensure the threaded studs are fully located into holes so as to enable the rear surface of beam to be fully bonded to wall with the uncured silicone adhesive.
- g) Position trestles into position to support weight of beam.
- h) Ensure the studs are fully clean without contamination. Place the washers onto threaded studs, use suitable thread and nut locking fluid and screw nuts onto each threaded stud at rear side of wall. Fully tighten the nuts ensuring the beam is fully against surface of wall ensuring a total bond has been made between wall and beam. **WARNING.** Do not over tighten the stud nuts as this will cause damage to the beam.
- i) Using suitable stainless steel screws and washers securely fix the beam and strap brackets to brick wall.  
**Important:** Ensure the area around the fireplace and beam fitting area is restricted to all persons and animals until all fitting materials have fully dried and cured and all fireplace components are deemed to be installed correctly and safely.
- j) When all adhesives have fully cured (refer to manufacturer's instructions for use, safety and curing times etc). Remove trestles.
- j) Make good the wall plaster around beam ensuring not to contaminate the beam with plaster or any other substance

COPYRIGHT: NEWMAN FIREPLACES LTD

EXAMPLE OF FITTING BEAM USING  
TRESTLES AS SUPPORT. NOTE:  
BEAM DOWEL FIXING SHOWN. USE  
TRESTLES ALSO TO SUPPORT THE  
THREADED STUD BEAM VERSION.



HOLES FOR THREADED STUDS OR  
ALTERNATIVELY HOLES & AIRWAYS  
FOR DOWEL FIXINGS



SIDE VIEW

SIDE

SOLID BRICK  
WALL.

AIRWAY

FIXING BRACKET & SUITABLE  
STAINLESS STEEL WALL PLUGS,  
SCREWS & WASHERS.

BEAM

DOWEL X 2

SUITABLE THIXOTROPIC  
TWO PART RESIN CHEMICAL  
ANCHOR FIXINGS.

FULLY GLUE REAR SURFACE OF BEAM  
TO WALL USING SUITABLE SILICONE ADHESIVE.

BEAM WITH NUT AND WASHER FIXINGS

SIDE VIEW

SOLID BRICK WALL.

FIXING BRACKET & SUITABLE  
STAINLESS STEEL WALL PLUGS,  
SCREWS & WASHERS.

BEAM

NUT &  
WASHER

THREADED  
STUD

FULLY GLUE REAR SURFACE OF BEAM  
TO WALL USING SUITABLE SILICONE ADHESIVE.



**CUSTOMER INFORMATION SAFETY AND CARE SHEET FOR FIREPLACES, INGLEBEAMS, CHAMBERS AND YORK STONE DESIGN CORNERS.**

**PLEASE KEEP FOR ANY FUTURE REFERENCE AND TO BE GIVEN TO ANY NEW HOUSEHOLDER.**

**Fireplace installation and servicing.**

- 1) All fireplaces, Inglebeams and any associated product must be installed by a qualified, competent and experienced installer complying to building regulations, British Standards, any rules in force and product manufacturers instructions.
- 2) Any down lights supplied with a fireplace must be installed by a qualified and approved electrician.
- 3) Servicing of down lights must be by a qualified and approved electrician.

**Fireplace Safety.**

- 1) Only use the fireplace when all adhesives are fully cured. Ask your fireplace installer for advice.
- 2) Only use your fireplace, Inglebeam or associated product for the use it was intended.
- 3) Do not walk, climb, swing or sit onto the fireplace, Inglebeam or any associated product, or place any load to any fireplace, Inglebeam or any associated part.
- 4) Do not allow children to play on the fireplace, Inglebeam or any associated part as this can be very dangerous. It is advised to use a full fire guard that is anchored to the wall that protects the complete fireplace, Inglebeam or any associated product whenever there are children in the room of installation.
- 5) Never place heavy objects onto the top of shelf or hearth of fireplace or Inglebeam, only light ornaments should be used and to be placed towards the rear edge of shelf or beam.
- 6) Always use approved fire guards with any fires that have naked flames or are heat producing. It is a regulation that you must use an approved fire guard when children, the elderly and the infirm are present and must be manufactured in accordance with BS 8423:2002 and such persons must be supervised at all times.
- 7) Never block any ventilation to the room provided at the time of fireplace installation.
- 8) Always ensure chimneys and appliances are maintained and serviced as the manufacturers instructions, building regulations and any rules in force.
- 9) Ensure the fireplace data plate provided by the installer has been installed and inform any new home owner of its position.
- 10) Never allow combustible articles to encroach onto the fireplace, Inglebeam and any associated part, such as carpets, curtains, furnishings and ornaments etc.
- 11) Never use any combustible sprays, liquids, stone sealer's, or any other combustible product near to the fireplace, Inglebeam or any associated part when there are naked flames or any heat is present including your fireplace heating appliance.
- 12) Do not use combustible decorating material to chimney wall with the Bideford Package deal.

**Fireplace Care.**

**Important.**

Care for any fireplace, Inglebeam or any associated product to be carried out only when any fire being used is totally extinguished and cold plus all parts of fireplace, Inglebeam or any associated part are completely cold.

### **General Fireplace Care And Safety Cautions.**

- 1) Avoid dropping anything onto any fireplace, Inglebeam or any associated product as this will cause damage.
- 2) Avoid vacuum cleaners or any other cleaning device coming into hard contact with any part of the fireplace, Inglebeam or any associated product.
- 3) Ensure the fireplace, Inglebeam and any other associated product is adequately protected when decorating as decorating materials can damage and stain the fireplace, Inglebeam etc.



### **Cleaning Limestone Fireplaces.**

- 1) It is advised that limestone fireplaces are sealed with an appropriate stone sealer after installation, but only when the fireplace is completely clean, cool and dry. Contact your fireplace retailer for advice.
- 2) Once the fireplace is sealed there should only be the need for light dusting. Dust with a soft colour fast cloth. Do not use any polish or any other substance on limestone fireplaces.
- 3) Avoid spillages onto the Limestone fireplace, if in the unfortunate event that a spillage occurs, soak up spillage immediately with a soft colour fast cloth or sponge and then clean with a damp colour fast cloth. If there is any stain after the fireplace has dried, please contact your fireplace retailer for advice as some spillages can be acidic that can penetrate the stone despite the use of stone sealer.

### **Cleaning Marble And Micro Agglomerate marble Fireplaces.**

- 1) As above, however marble sealing is not normally applied. Contact your fireplace retailer for advice.

### **Cleaning Inglebeam.**

- 1) Inglebeams only require light dusting. Dust with a soft colour fast cloth. Do not use any polish, water or any other solution. Avoid spillages of any kind to the beam. Do not place glasses or cups etc onto the beam.  
Avoid spillages onto the Inglebeam, if in the unfortunate event that a spillage occurs, soak up spillage immediately with a soft colour fast cloth or sponge and then clean with a colour fast cloth. Inglebeams must not be sealed.

### **Cleaning Brick, York , And Vermiculite Chambers Plus York Stone Design Corners.**

- 1) Brick, York and vermiculite chambers plus York stone design corners normally do not need to be cleaned but if required use a soft haired colour fast brush and dust lightly. Do not use any polish, water or any other solution. Avoid spillages of any kind to any chamber version and York stone design corners. Any Brick, York and vermiculite chambers plus York stone design corners must not be sealed.

### **Cleaning And Care Of Cast Iron Fireplaces.**

- 1) Cast iron fireplaces require only light dusting with a colour fast cloth, Do Not use polish, water or any other substance.  
Polished finished cast iron will tarnish especially in the area directly to the front of the fire being used, this is normal for this type of finish and not a fault with the cast iron polished finish. Black finished cast iron will tarnish especially in the area directly to the front of the fire being used, this is normal for this type of finish and not a fault with the cast iron black finish, however this can be re- blacked if so desired using suitable heat resistant paint, it is recommended that a suitably qualified installer should carry out this process. Contact your fireplace retailer for advice.  
Cast iron must not be sealed.